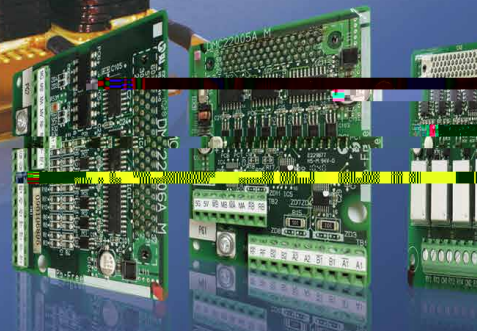


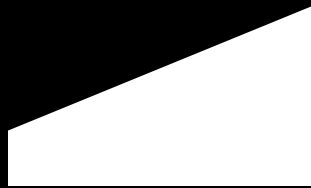
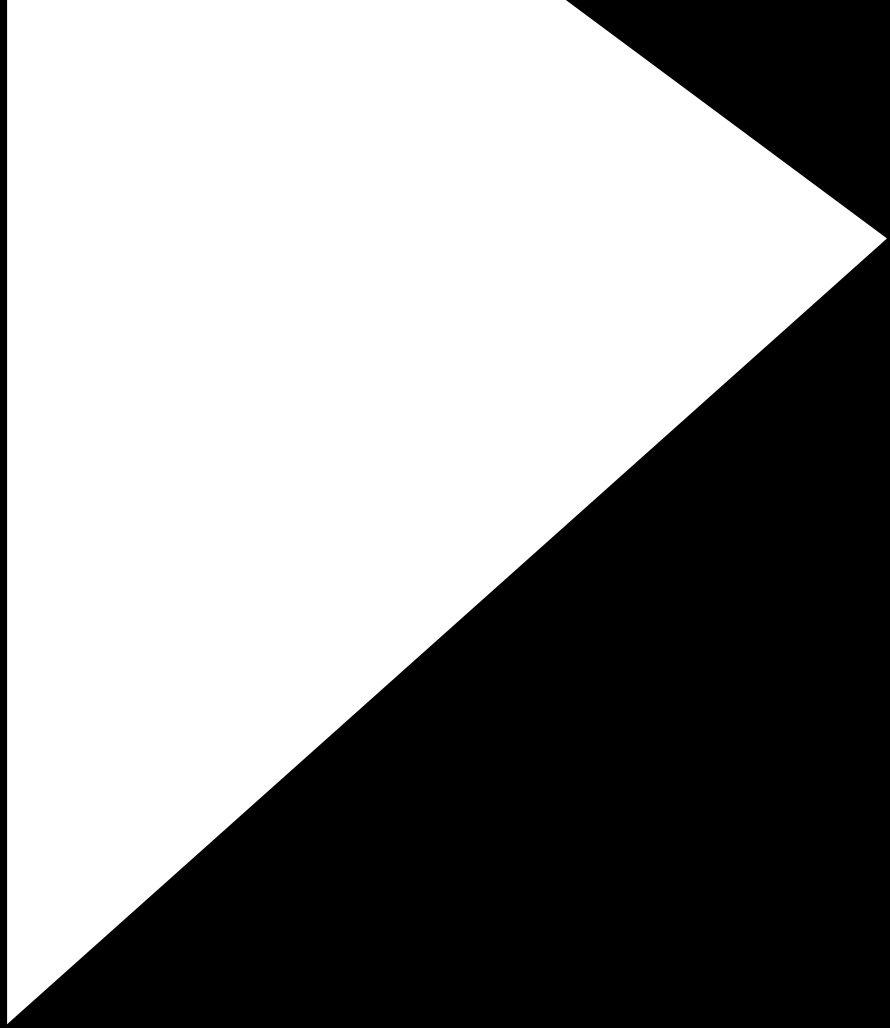


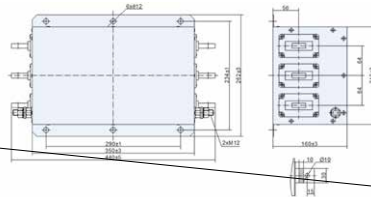
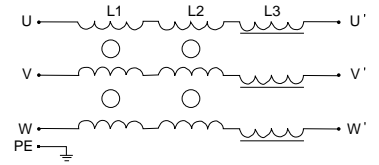
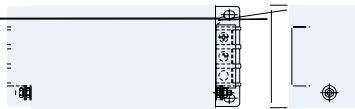
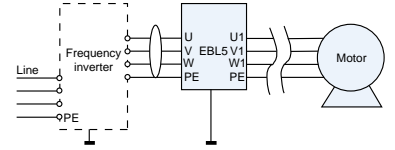
三 壑 力 達

MC

Optional Accessories







1	SVC06-0015	VM06-0015	NS-4A004-B	DL-5EBL5/40	5 A
2	SVC06-0022	VM06-0022	NS-4A006-B	DL-10EBL5/40	10 A
3	SVC06-0040	VM06-0040	NS-4A009-B	DL-10EBL5/40	10 A
4	SVC06-0055	VM06-0055	NS-4A013-B	DL-16EBL5/40	16 A
5	SVC06-0075	VM06-0075	NS-4A017-B	DL-25EBL5/40	25 A
6	SVC06-0110	VM06-0110	NS-4A024-B	DL-35EBL5/40	35 A
7	SVC06-0150	VM06-0150	NS-4A032-B	DL-50EBL5/40	50 A
8	SVC06-0185	VM06-0185	NS-4A038-B	DL-50EBL5/40	50 A
9	SVC06-0220	VM06-0220	NS-4A046-B	DL-65EBL5/40	65 A
10	SVC06-0300	VM06-0300	NS-4A061-B	DL-65EBL5/40	65 A
11	SVC06-0370	VM06-0370	NS-4A076-B	DL-80EBL5/40	80 A
12	SVC06-0450	VM06-0450	NS-4A092-B	DL-100EBL5/40	100 A
13	SVC06-0550	VM06-0550	NS-4A115-B	DL-130EBL5/40	130 A
14	SVC06-0750	VM06-0750	NS-4A152-B	DL-160EBL5/40	160 A
15	SVC06-0900	VM06-0900	NS-4A173-B	DL-200EBL5	200 A
16	SVC06-1100	VM06-1100	NS-4A211-B	DL-300EBL3	300 A
17	SVC06-1320	VM06-1320	NS-4A253-B	DL-300EBL3	300 A
18	SVC06-1600	VM06-1600	NS-4A304-B	DL-600EBL3	600 A
19	SVC06-1850	-	-	DL-600EBL3	600 A
20	SVC06-2000	VM06-2000	NS-4A386-B	DL-600EBL3	600 A
21	SVC06-2200	VM06-2200	NS-4A426-B	DL-600EBL3	600 A
22	SVC06-2500	VM06-2500	NS-4A472-B	DL-600EBL3	600 A
23	-	VM06-2800	NS-4A540-B	DL-600EBL3	600 A
24	-	VM06-3150	NS-4A590-B	DL-600EBL3	600 A
25	-	VM06-3550	-	DL-700EBL3	700 A
26	M6-3550-L4-H	M6-3550-L4-P	-	DL-700EBL3	700 A
27	M6-4000-L4-H	M6-4000-L4-P	-	DL-800EBL3	800 A
28	M6-4500-L4-H	M6-4500-L4-P	-	DL-1000EBL5	1000 A
29	M6-5000-L4-H	M6-5000-L4-P	-	DL-1000EBL5	1000 A
30	M6-5600-L4-H	M6-5600-L4-P	-	DL-1200EBL5	1200 A
31	M6-6300-L4-H	M6-6300-L4-P	-	DL-1200EBL5	1200 A

SVC06

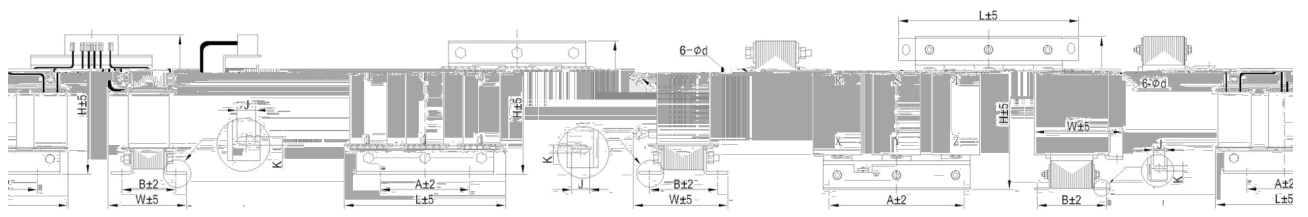
A

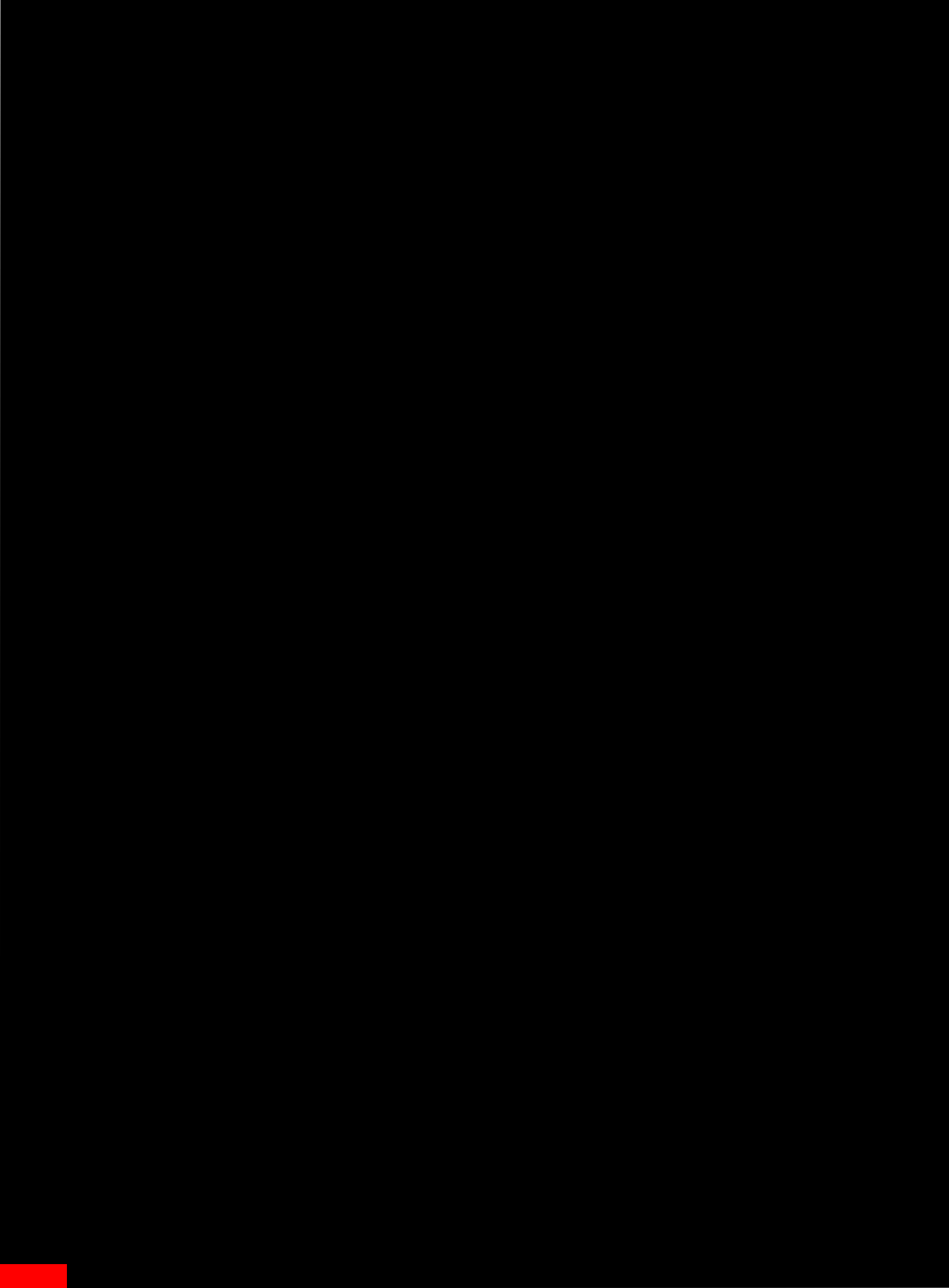
A B

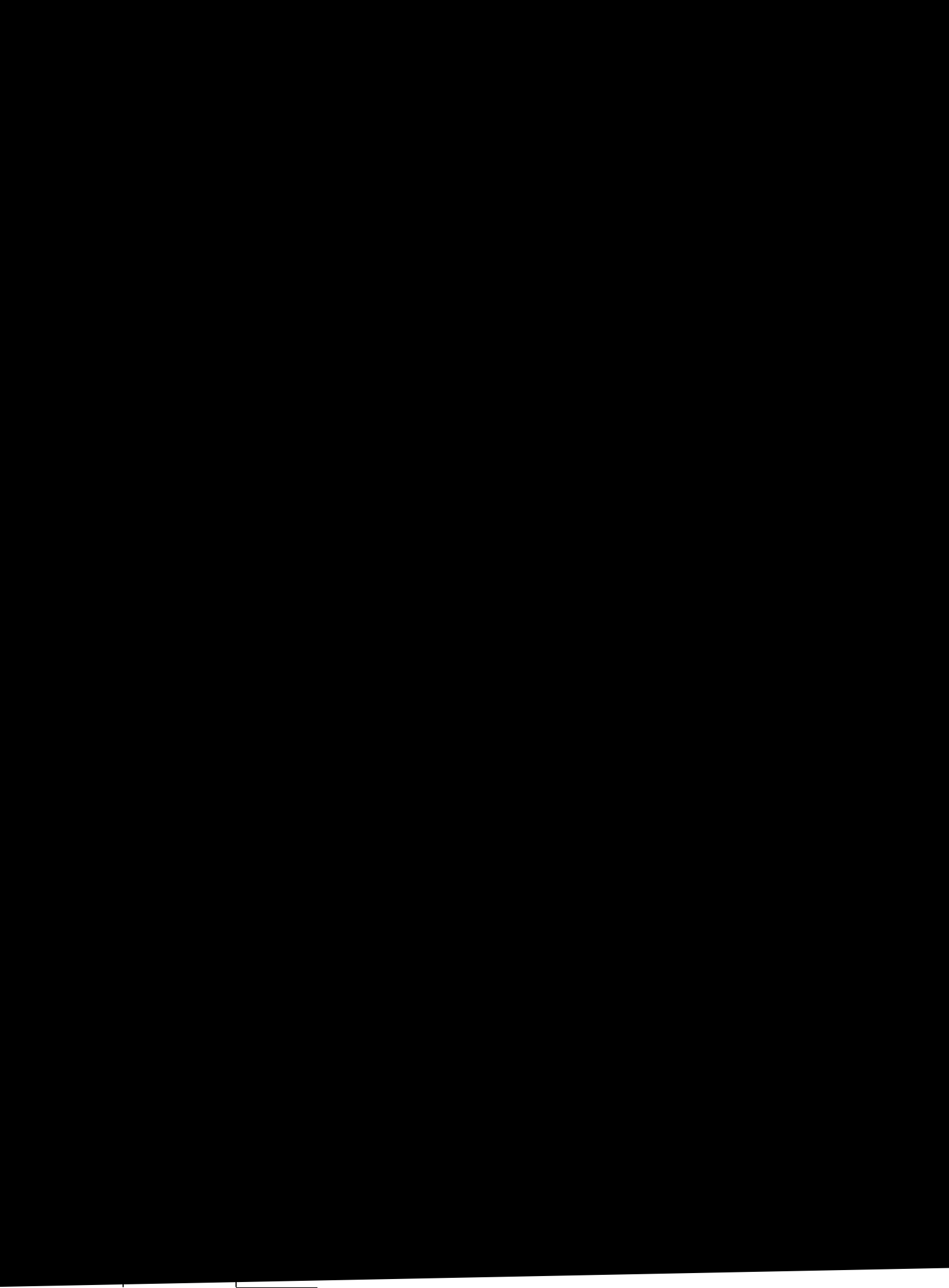





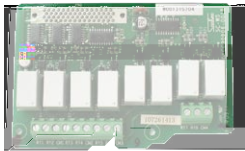

	kW	DC	(A)	mm			mm			mm	kg
				L	W	H	A	B	K× J		
1	1.5kW	SF-DCL-10	10	96	95	110	80	65	6× 11	8	3
2	2.2kW	SF-DCL-10	10	96	95	110	80	65	6× 11	8	3
3	4.0kW	SF-DCL-10	10	96	95	110	80	65	6× 11	8	3
4	5.5kW	SF-DCL-15	15	96	95	110	80	65	6× 11	8	3
5	7.5kW	SF-DCL-20	20	96	95	110	80	65	6× 11	8	3
6	11kW	SF-DCL-30	30	96	95	110	80	65	6× 11	8	3
7	15kW	SF-DCL-40	40	120	110	150	90	76	6× 11	8	5
8	18.5kW	SF-DCL-40	40	120	110	150	90	76	6× 11	8	5
9	22kW	SF-DCL-50	50	150	125	170	110	97	7× 12	8	9.8
10	30kW	SF-DCL-80	80	160	145	175	65	91	8× 20	8	7.5
11	37kW	SF-DCL-80	80	160	145	175	65	91	8× 20	8	7.5
12	45kW	SF-DCL-110	110	150	170	185	65	91	8× 20	8	7.5
13	55kW	SF-DCL-120	120	160	145	175	65	91	8× 20	8	7.9
14	75kW	SF-DCL-200	200	180	180	220	70	119	11× 24	11	14.6
15	90kW	SF-DCL-200	200	180	180	220	70	119	11× 24	11	14.6
16	110kW	SF-DCL-250	250	180	180	220	70	119	11× 24	11	15.2

- 1 VM06 45 kW DC DC
- 2 SVC06 18.5 kW DC DC
- 3 NS 132 kW DC DC







PG		SC-PG1	(PG) A B (PG) PG +5V	VM06 SVC06 M6
		SC-PG2	(PG) A B / PG PG +12V	
		SC-PG3	(PG) A B / PG PG +24V	
		SC-WS	PID PLC 7	Vm06-0900
PROFIBUS		SC-PB2	PROFIBUS PROFIBUS	VM06 SVC06 M6

: 1 2
2
3
4

1		SC-PG1	SC-PG2	SC-PG3	SC-WS	SC-PB2
2	-				x	x
	SC-PG1	x	x	x	x	x
	SC-PG2	x	x	x	x	x
	SC-PG3	x	x	x	x	x
	SC-WS	x	x	x	x	x
	SC-PB2				x	x

SC-WS SC-PB2 2
x

PG SC-PG

1

A	
SC-PG1	2 (5V) 500 kHz(1)
SC-PG2	2 250 kHz 12V
SC-PG3	2 250 kHz 24V

1

2 PG

(SC-PG1)

A		A	
A1	(CH1) A	A1	(CH1) A
B1	(CH1) B	B1	(CH1) B
A2	(CH2) A	A2	(CH2) A
B2	(CH2) B	B2	(CH2) B

1

1 2 A B PG

SC-PG2 SC-PG3

A1 **		B1 **	
A1+	A1 **	B1+	B1 **
A1-	A1 **V GND	B1-	B1 ** GND
A2+	A2 **	B2+	B2 **
A2-	A2 ** GND	B2-	B2 ** GND

3

4

(F8104)

		F8104		
		1:	2:	3:
RF				A
RF				
RB				B
RB				

		F8104		
		1:	2:	3:
RF+				A
RF-				
RB+				B
RB-				

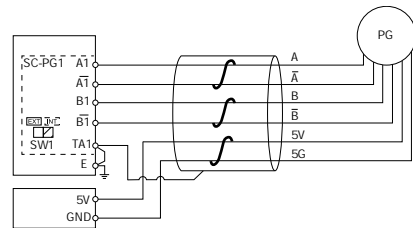
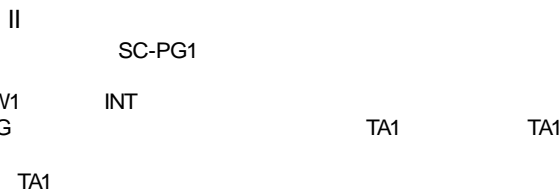
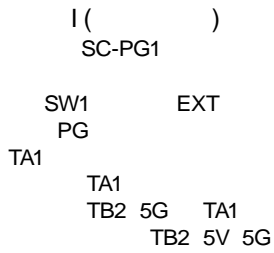
PG

SC-PG

6)

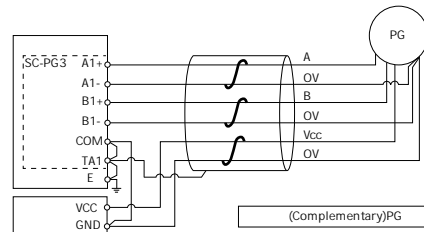
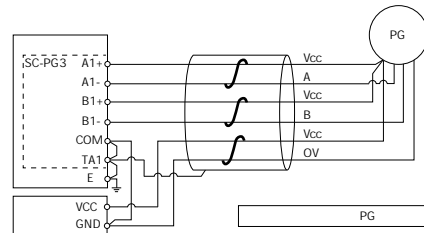
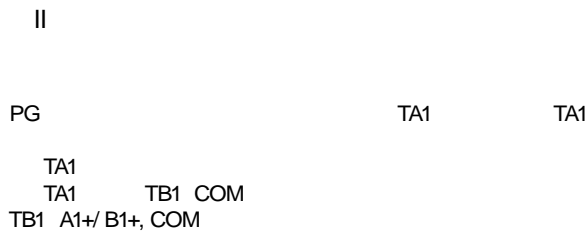
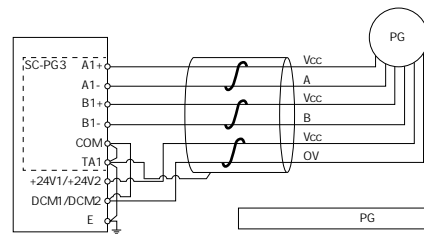
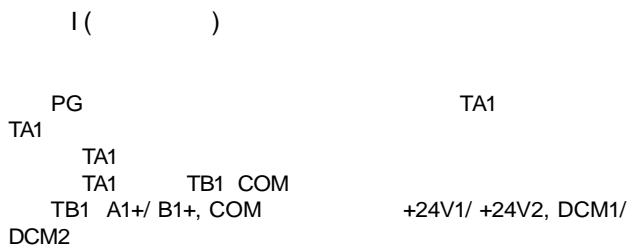
SC-PG1

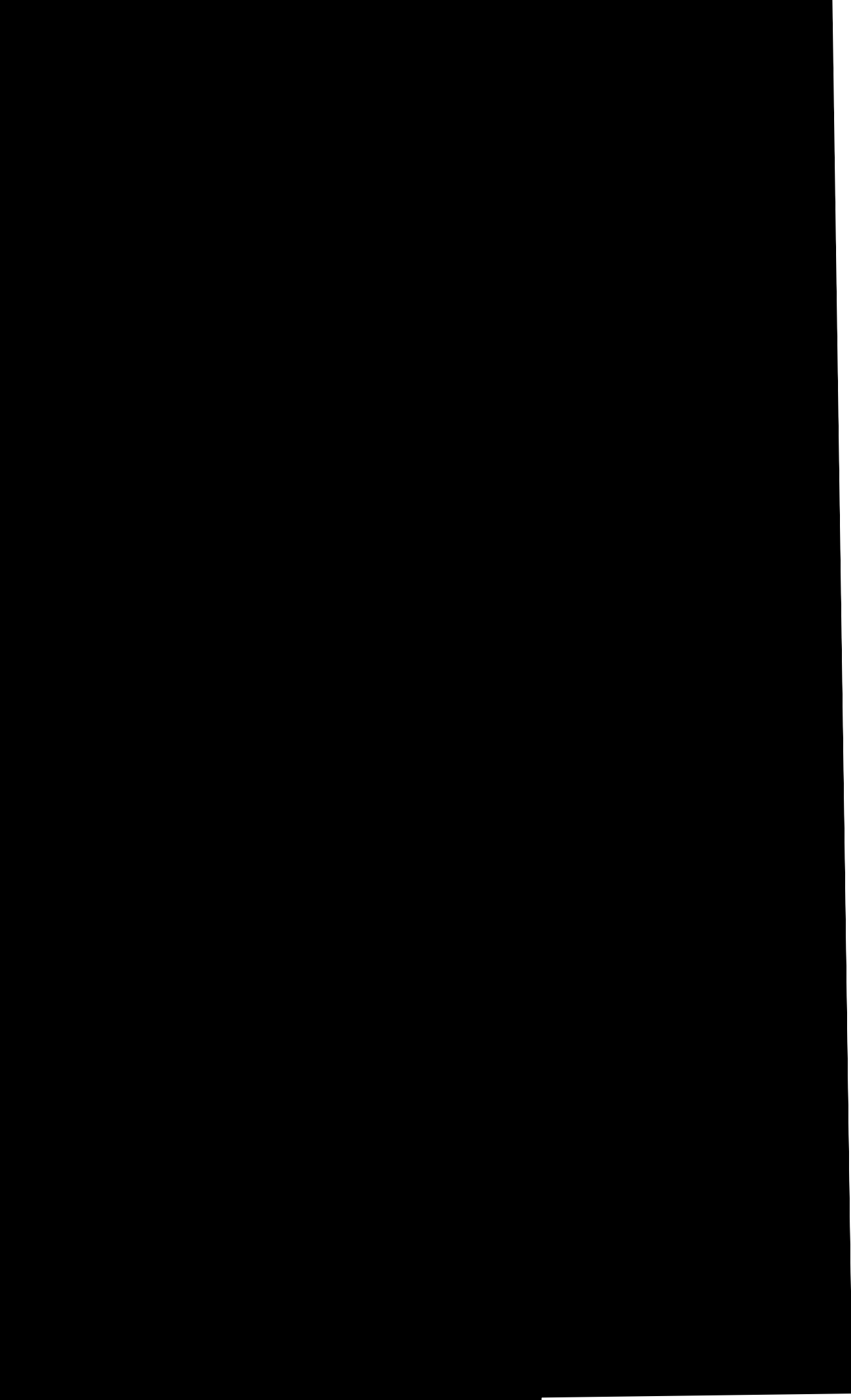
SC-PG1 2 I PG



SC-PG2,3

SC-PG3 2 PG2 I PG II





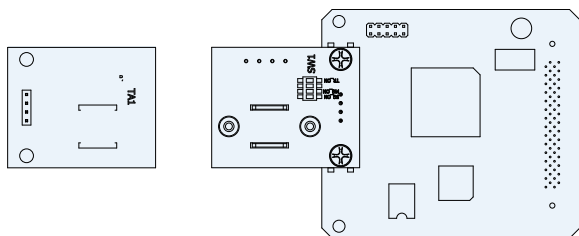
SC-PB2
PROFIBUSDP

SVC06 VM06 M6

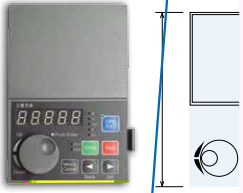
PROFIBUS

SC-PB2

	DP-V0
	PROFIdrive Version3
	IEC-61158 61784 GB/T20540-2006
	RS-485
	A
	MG 5G
	1200m
	1200m
	1200m
	1200m
	1000m
	400m
	200m
	100m
	100m
	100m
PPO TYPE	PPO TYPE1 TYPE5
	32
	126
LED	/
	-10 +50
	-20 65
	3000m
	5.9m/s2 0.6G JIS C 60068-2-6 IEC60068-2-6



LED

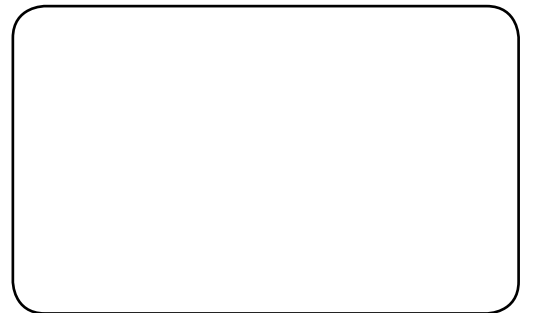


VM06

SV0



NS



KL1-V20CB3-210300MD

